

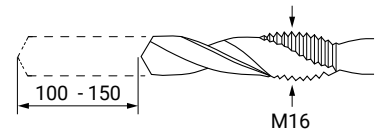
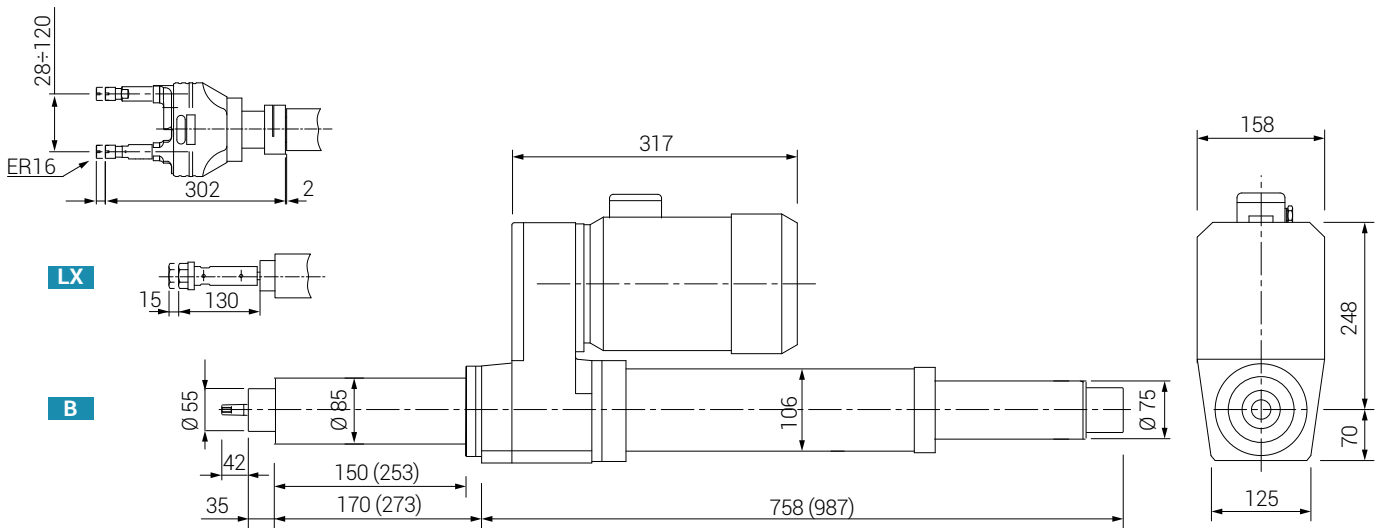


# Units for combined drill-tapping Bohr- und Gewindeschneideinheiten

	THRUST VORSCHUBKRAFT	4000 N
	WEIGHT GEWICHT	45-49 Kg



<b>TAPPING CAPACITY IN STEEL R=60</b> <b>SCHNEIDLEISTUNG IN STAHL R=60</b> <b>M16</b>	<b>STROKE HUB</b> <b>100 mm</b> <b>150 mm</b>	<b>TOOLHOLDER WERKZEUGAUFNAHME</b> <b>B = B18 DIN 238</b> <b>LX = ER20</b> <i>Compensated / Spannzangenhalter</i>	<b>SPINDLE RPM (50HZ) / SPINDEL DREHZAHL</b> <table border="1"> <tr> <td>Z1</td> <td>750 1200</td> <td>4/6 P</td> <td rowspan="3">TIMING BELT ZAHNRIEMEN</td> </tr> <tr> <td>Z2</td> <td>1200 2400</td> <td>2/4 P</td> </tr> <tr> <td>Z3</td> <td>2000 4000</td> <td>2/4 P</td> </tr> </table>	Z1	750 1200	4/6 P	TIMING BELT ZAHNRIEMEN	Z2	1200 2400	2/4 P	Z3	2000 4000	2/4 P		
Z1	750 1200	4/6 P	TIMING BELT ZAHNRIEMEN												
Z2	1200 2400	2/4 P													
Z3	2000 4000	2/4 P													
<b>DTX 16 /.. /.. /.. /.. /..</b>															
<b>MOTOR / MOTOR</b> <table border="1"> <tr> <td>903</td> <td>=</td> <td>90</td> <td>-</td> <td>1.3/1.1 kW</td> <td>2/4 P</td> </tr> <tr> <td>904</td> <td>=</td> <td>90</td> <td>-</td> <td>1.1/0.75 kW</td> <td>4/6 P</td> </tr> </table> <p>Max frame 112 / Max Größe 112</p>	903	=	90	-	1.3/1.1 kW	2/4 P	904	=	90	-	1.1/0.75 kW	4/6 P	<b>HYDROCHECK / HYDRAULIKBREMSE</b> <b>HF50 = STROKE/ HUB 50 mm</b> <b>HF75 = STROKE/ HUB 75 mm</b> <b>HF100 = STROKE/ HUB 100 mm</b>		
903	=	90	-	1.3/1.1 kW	2/4 P										
904	=	90	-	1.1/0.75 kW	4/6 P										



Dimension ( ) are for the 150 mm stroke unit / (Quoten) = Einheit mit Hub 150

## ACCESSORIES

(Page 40)

- Multi spindle heads with compensating spindle
- Selfbreaking motor on request
- Double polarity motor
- For brackets see 3D pictures

## ZUBEHÖR

(Seite 40)

- Mehrspindelköpfe mit Kompensierte Spindel
- Bremsmotor auf Anfrage
- Polumschaltbarer Motor
- Zubehör siehe 3D Abbildung

