

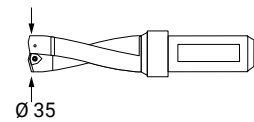


Machining spindles Spindleinheiten

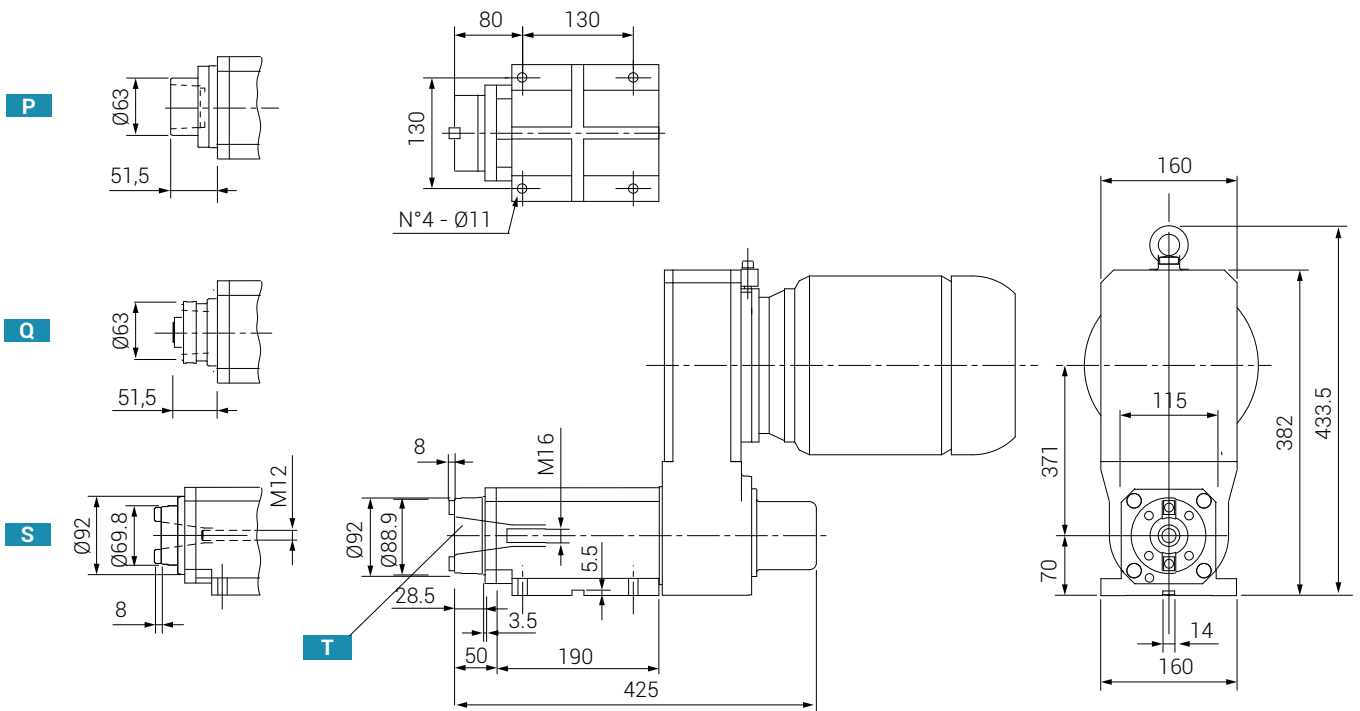
	MAX AXIAL LOAD MAX AXIALE BELASTUNG	9000 N
	WEIGHT GEWICHT	40 - 50 Kg



SPINDLE RPM (50HZ) / SPINDELDREHZAHL			CHAIN KETTE	MAX. DRILLING CAPACITY IN STEEL R=60 MAX. BOHRLEISTUNG IN STAHL R=60	MOTOR ISO 30 / MOTOR ISO 30		MOTOR ISO 40 / MOTOR ISO 40	
E	400	6P				Ø 35	205 = 90 - 1.5 kW 2P	207 = 100 - 3 kW 2P
F	500			406 = 90 - 1.5 kW 4P	407 = 100 - 2.2 kW 4P			
G	600			606 = 90 - 1.1 kW 6P	607 = 100 - 1.5 kW 6P			
H	800	6P		Max frame 112 / Max Größe 112				
I	1000							
J	1200							
K	1500	4P	TIMING BELT ZAHNRIEMEN					
L	1800							
M	2000							
N	2400							
O	3000	2P						
P	3600							
Q	4000							
R	4500							
S	5400	2P	POLY - V BELT POLY - V RIEMEN					
T	6400							
U	7500							
V	8400							

DX 28 /.. /.. /.. /..

TOOLHOLDER WERKZEUGAUFNAHME	BEARINGS / LAGERUNG
P = HSK 63 A	RC = Taper roller bearings / Kegelrollenlager
Q = HSK 63 C	CO = Double pair of angular contact bearings / Doppelpaar Schrägkugellager
S = ISO 30 DIN 2079	
T = ISO 40 DIN 2079	



COOLANT THROUGH FACILITY
MIT INNENKÜHLUNG

HYDRAULICALLY UNCLAMPED (ISO40)
HYDRAULISCHE ENTSPANNUNG (ISO40)

PNEUMATICALLY UNCLAMPED (ISO40)
VORBEREITUNG FÜR INNENKÜHLUNG (ISO40)

