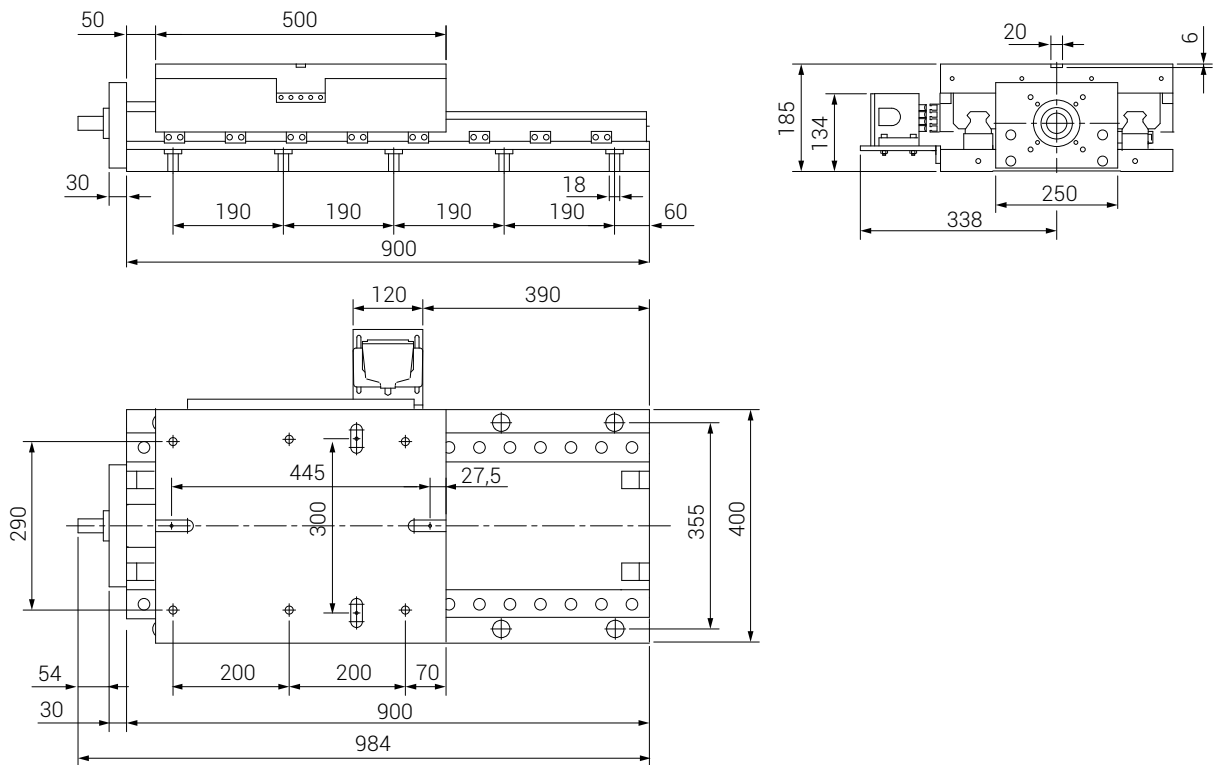


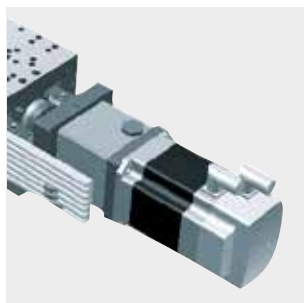
CNC slide units with ball screw and ball bearing ways CNC Vorschubeinheiten mit Kugelumlaufspindel und linearkugellagern

EX 58 /..

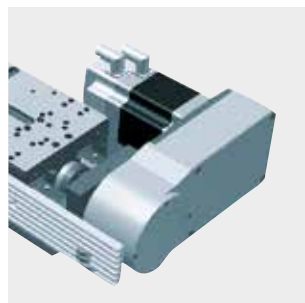
STROKE HUB mm	STRENGHT VORSCHUBKRAFT MAX	WEIGHT GEWICHT Kg	BALL SCREW KUGELUMLAUFSPINDEL	RECOMMENDED FOR EMPFOHLEN FÜR
300	21400 N	320	Ø 40 x 5 mm	DX58 - DX88



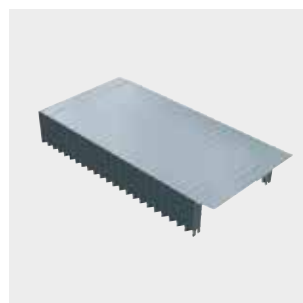
**IN LINE FEED MOTOR
VORBEREITUNG DIREKTANTRIEB**



**OFF SET MOTOR
VORBEREITUNG RIEMENANTRIEB**



**BELLOW TYPE COVER
FALTENBALGABDECKUNG**



**ROLLER CIRCULATING RAILS/PADS
FÜHRUNGEN MIT KUGELUMLAUFWAGEN**

