

**DRILL
MATIC**
by **EUROMA**GROUP

Inquiry form

VALID FROM 1.01.2019

Company references

COMPANY REFERENCES

Company:

Address:

Telephone:

E-mail:

Person in charge:

Website:

COMMENTS

.....

.....

.....

.....

.....

.....

.....

.....

.....

.....

.....

.....

.....

Date.....

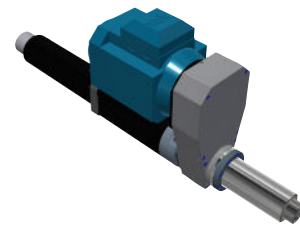
Signature.....

POWER SUPPLY

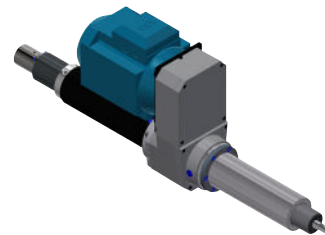
- Pneumatic - air
- Hydraulic - oil
- Electric - ball screw

PRODUCT

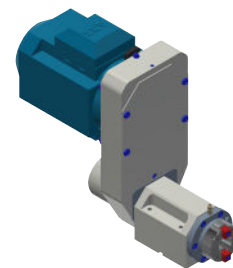
- Drilling unit



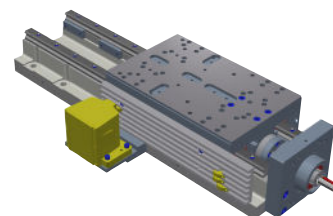
- Tapping unit



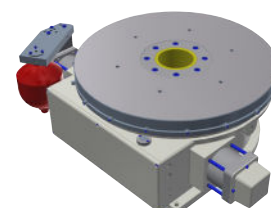
- Machining spindle



- Slide unit



- Rotary indexing tables



DRILLING OPERATION WITH QUILL UNITS

Material

Hole dimension mm Diameter:..... Depth :.....

Type of hole Through hole Blind hole

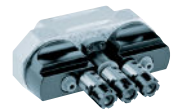
Tool material HSS/HSCo
 Other :

Speed rpm

Total stroke mm

Working stroke mm

Operation for Single tool Multi spindle head
(Please inform us about drilling position)



SUPPORTS

Base:.....

Parallel clamp:.....

Cross bracket:.....

Base clamp:.....

Adjustable base:.....

Adjustable column:.....

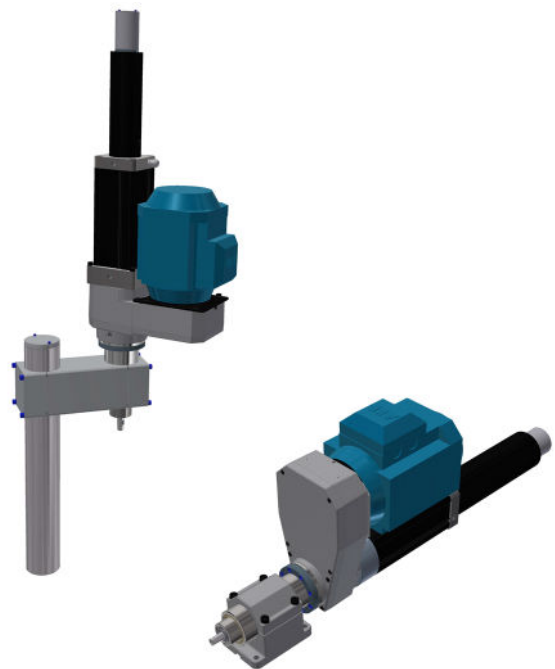
Column:.....

Cross bracket for column:.....

Cap:.....

Stop collar:.....

Adjustable support:.....



TAPPING OPERATION WITH QUILL UNITS

Material

Tapping dimension mm Diameter:..... Pitch:..... Depth:.....

Type of hole Through hole Blind hole

Tapping method Traditional Thread

Speed rpm

Working stroke mm

Total stroke mm

Operation for: Single tool Multi spindle head
 (Please inform us about drilling position)



SUPPORTS

Base:.....

Parallel clamp:.....

Cross bracket:.....

Base clamp:.....

Adjustable base:.....

Adjustable column:.....

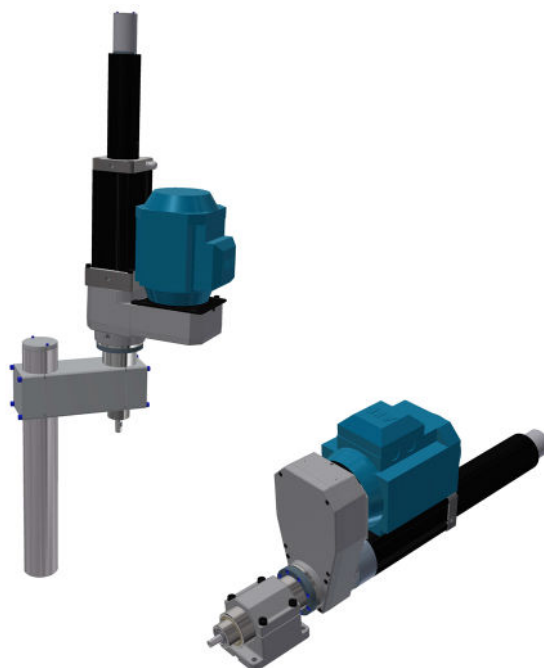
Column:.....

Cross bracket for column:.....

Cap:.....

Stop collar:.....

Adjustable support:.....



MACHINING SPINDLE

Material

Tool type

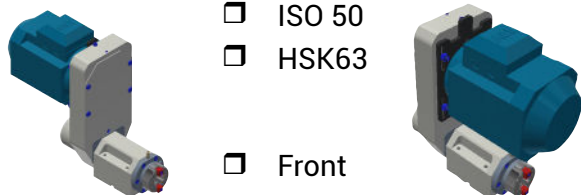
Operation type Drilling Boring
 Milling Reaming

Speed rpm

Motor power

Tool holder ISO 30 ISO 50
 ISO 40 HSK63

Motor mounting position Rear Front



Operation for Single tool Multi spindle head

ADDITIONAL DATA

.....

.....

.....

.....

SLIDE UNIT

Total stroke mm

Required thrust N

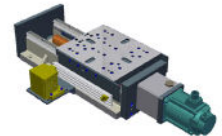
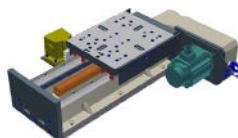
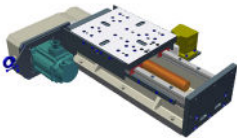
Guide cover Not required Required

Slide unit mounting position Vertical Horizontal

FOR BALL SCREW SLIDE UNITS:

Motor feed mounting position

Offset on right side Offset on left side In line



Servomotor

Model

ADDITIONAL DATA

.....
.....
.....
.....

ROTARY TABLES

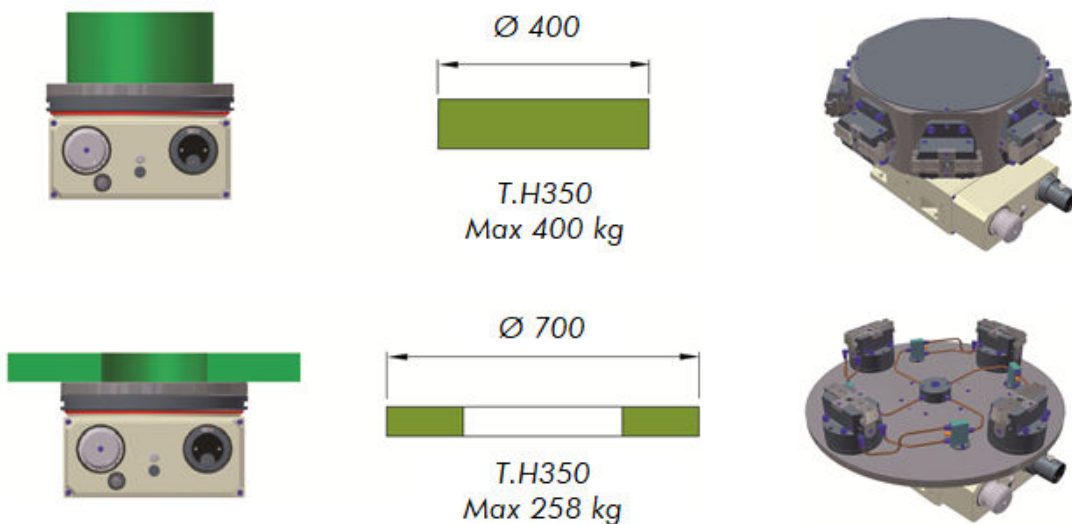
Number of station

Operation

- Drilling n°..... Max. Diameter mm:.....
- Tapping n°..... Max. Diameter mm:.....
- Milling n°..... Depth mm..... Stroke mm.....

Workpiece weight kg

NOTE: During rotation the plate of the table lift 3-4 mm (depending on size).



ADDITIONAL DATA

.....

.....

.....

.....

