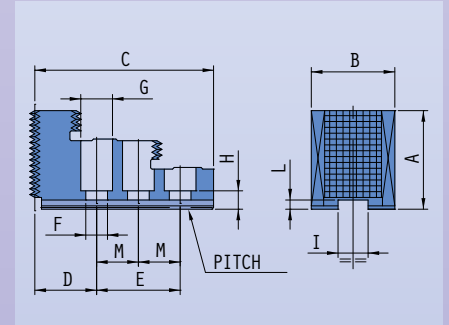
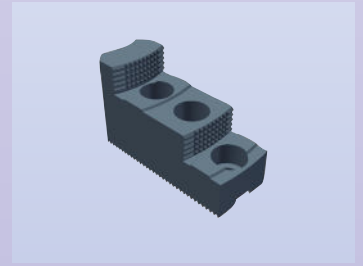


● "A" - "K" Series

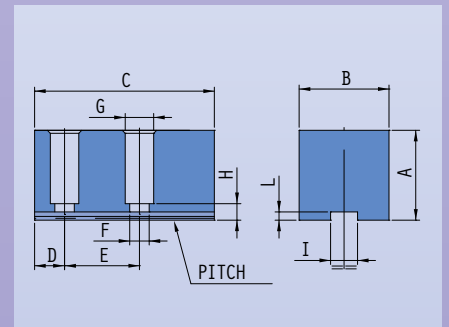
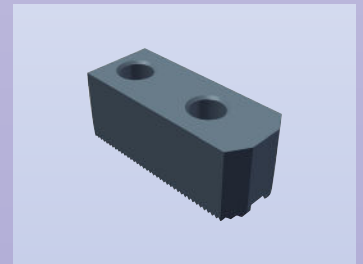
HARDENED REVERSIBLE JAWS, STEP TYPE

Size	A	B	C	D	E	F	G	H	IH8	L	M	Pitch	Weight	
mm	mm	mm	mm	mm	mm	mm	mm	mm	mm	mm	mm	mm	kg	
230														
154	250	52	35	91	30	-	11	18	10	12	4.5	25	2.5x60°	0.7
270														
239	300	59	50	110	40	-	13	19	11	18	5	25	2.5x60°	1.3
488	400	70	60	150	50	-	17	25	12	20	5.5	37.5	2.5x60°	2.6
1270	170	40	28	74	28	36	9	14	8	10	4	-	2.5x60°	0.3
1334	200	42	30	80	32	36	9	14	8	10	4	-	2.5x60°	0.4
1365	140	30	25	64	18	30	9	14	8	10	4	-	2.5x60°	0.2
1654	120	24	24	51	21	18	6.5	10.5	8	8	4	-	2.5x60°	-
1614	500	80	70	180	75	80	23	33	15	30	6	40	2.5x60°	3.8
1424	315	58	44	135	36	-	16	24	14	21	5	36	1/16"x90°	1.5
1425	200	44	38	87	30	-	11	18	12	12	4.5	21	1/16"x90°	0.5
1430	150	28	25	60	18	-	9	14	8	10	4	16	1/16"x90°	0.15
1436	250	46	44	100	21	-	16	24	14	21	5	30	1/16"x90°	0.8
1521	400	70	60	150	50	-	17	25	12	20	5.5	37.5	3/32"x90°	2.6



SOFT JAWS

Size	A	B	C	D	E	F	G	H	IH8	L	Pitch	Weight	
mm	mm	mm	mm	mm	mm	mm	mm	mm	mm	mm	mm	kg	
155	230	40	40	100	16	50	11	18	10	12	4.5	2.5x60°	1.4
240	300	60	60	120	20	50	13	19	11	18	5	2.5x60°	3.6
330													
489	400	60	60	150	25	75	17	25	12	20	5.5	2.5x60°	4.0
525	250	40	40	125	16	50	11	18	10	12	4.5	2.5x60°	1.4
270													
636	120	25	25	55	11	22	6.5	10.5	8	8	4	2.5x60°	0.2
1271	170	30	30	80	16	36	9	14	8	10	4	2.5x60°	0.5
1314	90	20	20	45	7	25	6.5	10.5	6	7	3	2.5x60°	0.1
1335	200	35	35	90	16	36	9	14	8	10	4	2.5x60°	0.7
1364	140	25	25	65	12	30	9	14	8	10	4	2.5x60°	0.25
1613	500	70	70	180	25	80	23	33	15	30	6	2.5x60°	4.6
1294	315	50	50	140	32	36	16	24	14	21	4.5	1/16"x90°	2.4
1390	150	30	25	65	12	16	9	14	8	10	4	1/16"x90°	0.2
1407	200	40	40	90	12	38	11	18	10	12	4.5	1/16"x90°	1
1435	250	50	50	115	32	38	16	24	14	21	5	1/16"x90°	2
1520	400	60	60	145	25	75	17	25	12	20	5.5	3/32"x90°	3.8



T-NUT

	A	B	C	D f8	E	F	G	H
	mm	mm	mm	mm	mm	mm	mm	mm
t59	19.5	17.5	26	12	11	9	M10	-
241	26.5	24.5	32	18	17	12	M12	-
490	33.5	30.5	35	20	20	15	M16	-
635	14	12	12	8	8.5	6	M6	-
1292	29.5	∅28	-	21	19	-	M14	-
1298	15.5	14.5	19	10	8.5	7	M8	-
1429	29.5	28	30	21	19	15	M14	-
1447	16	14.5	32	10	9	8	M8	16
1612	35	39	45	30	18	18	M20	-

