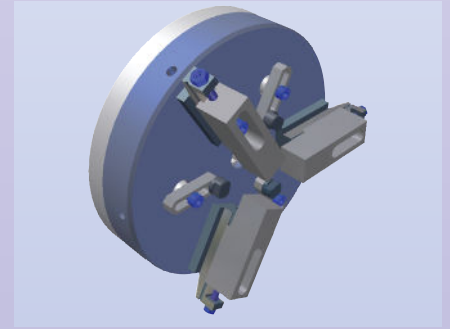
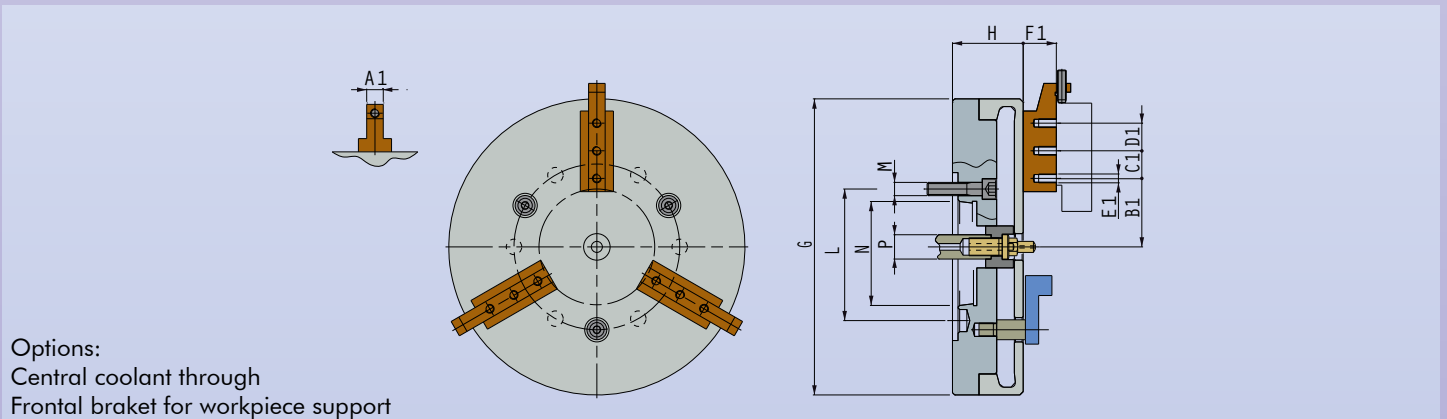


● **Diaphragms - 3 base jaws**

- Clamping system based on diaphragm deformation without any internal sliding
- Jaws fixed directly on the diaphragm body
- High clamping and centering accuracy
- Repeatability within 0.005mm
- Suitable for gear clamping on pitch diameter

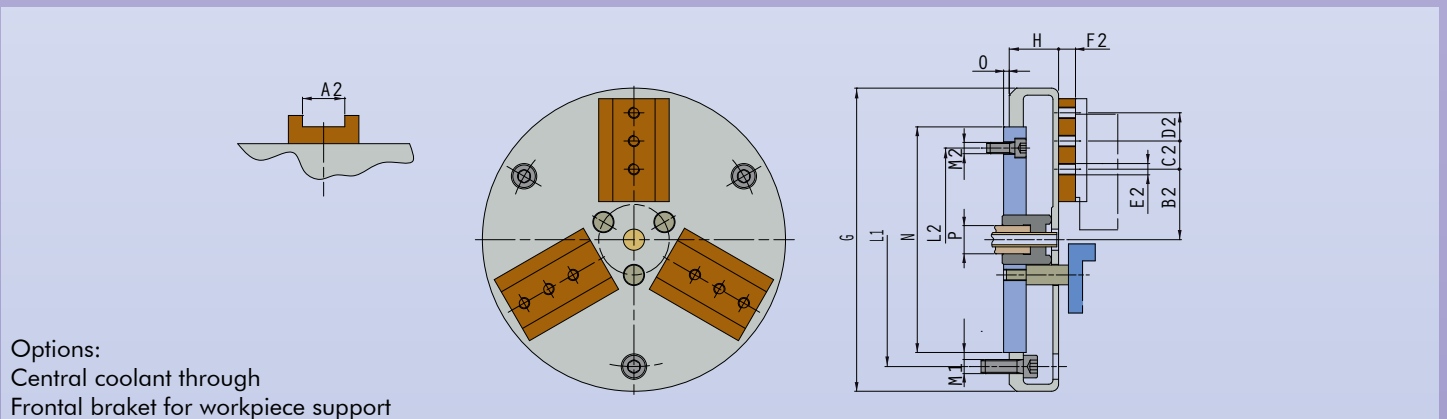


SLIDERS WITH MALE SLOT AND EXTERNAL ADJUSTMENT



	ASA 5"				ASA 6"				ASA 8"				ASA 11"				Weight	Jaw						
	A1 h6	B1	C1	D1	E1	F1	G	H	P	L	M	N	L	M	N	L	M	N	L	M	N	kg	Ref.	
Diaphragm 200	15	40	22	22	M6	25	200	49	22	104.8	M10	82.56	—	—	—	—	—	—	—	—	—	—	14	1923
Diaphragm 250	15	53	25	25	M8	30	250	60	—	—	—	—	—	—	—	171.4	M16	139.71	—	—	—	—	18	1584
Diaphragm 268	15	62	25	25	M8	30	268	64	22	104.8	M10	82.56	133.4	M12	106.37	—	—	—	—	—	—	—	21	1584
Diaphragm 300	15	75	25	25	M8	30	300	64	22	104.8	M10	82.56	133.4	M12	106.37	171.4	M16	139.71	—	—	—	—	26	1584
Diaphragm 400	20	110	30	30	M10	40	400	72	25	—	—	—	—	—	—	171.4	M16	139.71	235	M20	196.86	34	1585	

SLIDERS WITH FEMALE SLOT



	A2 H6	B2	C2	D2	E2	F2	G	H	L1	M1	L2	M2	Ng6	O	P	Weight	Jaw
	mm	mm	mm	mm	mm	mm	mm	mm	mm	mm	mm	mm	mm	mm	mm	kg	Ref.
Diaphragm 150	20	43	15	—	M6	11	150	25	124	3x M6	80	3x M6	105	4	20	3,5	1583
Diaphragm 180	20	43	15	15	M6	11	180	28	145	3x M10	95	3x M6	125	4	20	4	1583
Diaphragm 180/4	20	43	15	15	M8	11	180	28	145	3x M10	82.5	3x M10	ASA 4"	16	20	5	1583
Diaphragm 215	30	50	20	20	M8	12	215	35	180	3x M10	130	3x M8	160	4	20	6,5	1582