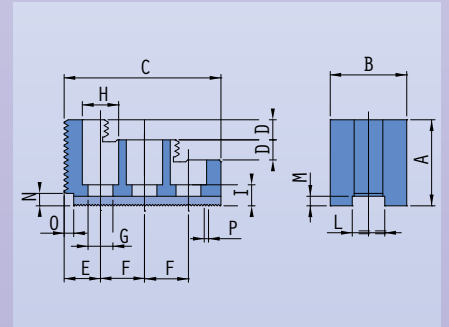
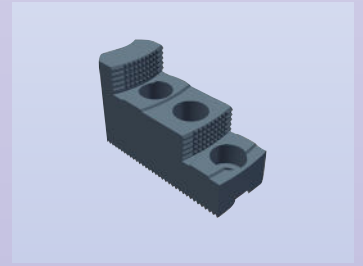


● "GB" - "KZ" - "GH" - "GX" Series

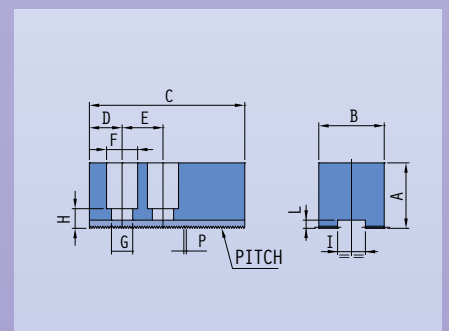
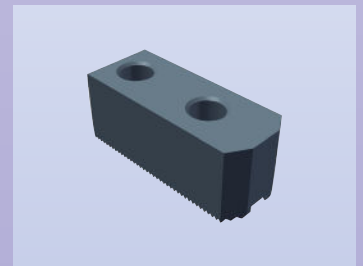
HARDENED REVERSIBLE JAWS, STEP TYPE

Size	Type	Pitch	A	B	C	D	E	F	G	H	I	L _{H8}	M	N	O	
mm		mm	mm	mm	mm	mm	mm	mm	mm	mm	mm	mm	mm	mm	mm	
2211A	130	GB	1/16"x90°	34	29	58	8.5	14	16	9	14	8	12	4	5	2
2212A	130	GB	1.5x60°	34	29	58	8.5	14	16	9	14	8	12	4	5	2
	165	GB														
2031A	180	GH	1/16"x90°	39	34	65	10	18	16	11	17	10	14	4	5.5	4
	208	GX														
2032A	165	GB	1.5x60°	39	34	65	10	18	16	11	17	10	14	4	5.5	4
2033K	165	GB	1.5x60°	36	31	67	12	14	20	11	17	12	12	5	5	4
2044A	210	GB KZ	1/16"x90°	45	40	82	10.5	19	23	13	19	11	17	5	6.5	5
2045A	210	GB GZ	1.5x60°	45	40	82	10.5	19	23	13	19	11	17	5	6.5	5
2046K	210	GB GZ	1.5x60°	51	35	87	12	14	25	13	19	14	14	5	5	4
	250	GB GZ GH GX	1/16"x90°	56	45	105	13.5	28	30	17	25	12	21	6	8	5
	260	GB GH GX														
2058A	250	GB KZ	1.5x60°	56	45	105	13.5	28	30	17	25	12	21	6	8	5
	315	GB														
2059K	250	GB KZ	1.5x60°	54	40	105	13	24	30	13	19	15	16	5	5	4.5



SOFT JAWS

Size	Type	Pitch	A	B	C	D	E	F	G	H	I	H8	L
mm		mm	mm	mm	mm	mm	mm	mm	mm	mm	mm	mm	mm
F7302014A	130	GB	1/6"x90°	30	30	60	15	16	14	9	10	12	4
F7402015A	130	GB	1.5x60°	30	30	60	15	16	14	9	10	12	4
F7402016K	130	GB											
	165	GB											
F7302034A	180	GH	1/6"x90°	35	35	75	16	16	17	11	11	14	5
	208	GZ											
F7402035A	165	GB	1.5x60°	35	35	75	16	16	17	11	11	14	4
F7402036K	165	GB	1.5x60°	30	30	80	19	20	17	11	12	12	5
F7302047A	210	GB KZ	1/6"x90°	40	40	95	20	23	19	13	11	17	5
F7402048A	210	GB KZ	1.5x60°	40	40	95	20	23	19	13	11	17	5
F7402049K	210	GB KZ	1.5x60°	40	40	95	20	25	19	13	11	14	5
	250	GB KZ GH GX	1/6"x90°	50	50	115	20	30	25	17	13	21	6
	260	GB GH GX											
	315	GB GH GX											
F7402061A	250	GB KZ	1.5x60°	50	50	115	20	30	25	17	13	21	6
	315	GB											
F7302062K	250	GB KZ	1.5x60°	40	40	115	30	30	19	13	13	16	5



T-NUT

	A	B	C	Df8	E	F	G	H	I	L
	mm	mm	mm	mm	mm	mm	mm	mm	mm	mm
F7502210	15	17	M8	12	-	8.5	-	30	7	16
F7502209	15	14	M8	10	-	9.8	-	30	6	18
F7502027	18.5	18	M10	14	10.9	12	8	32	8	16
F7502026	18.5	18	M10	12	-	11	-	40	10	20
F7502038	20	19	M12	17	13.5	12.5	7.5	45	12	23
F7502037	20	20	M12	14	-	12	-	45	10	25
F7502051	25	29	M16	21	-	14	-	54	12	30
F7502050	25	29	M12	16	21	14	9	54	12	30
F7502051	25	29	M16	21	-	14	-	54	12	30

